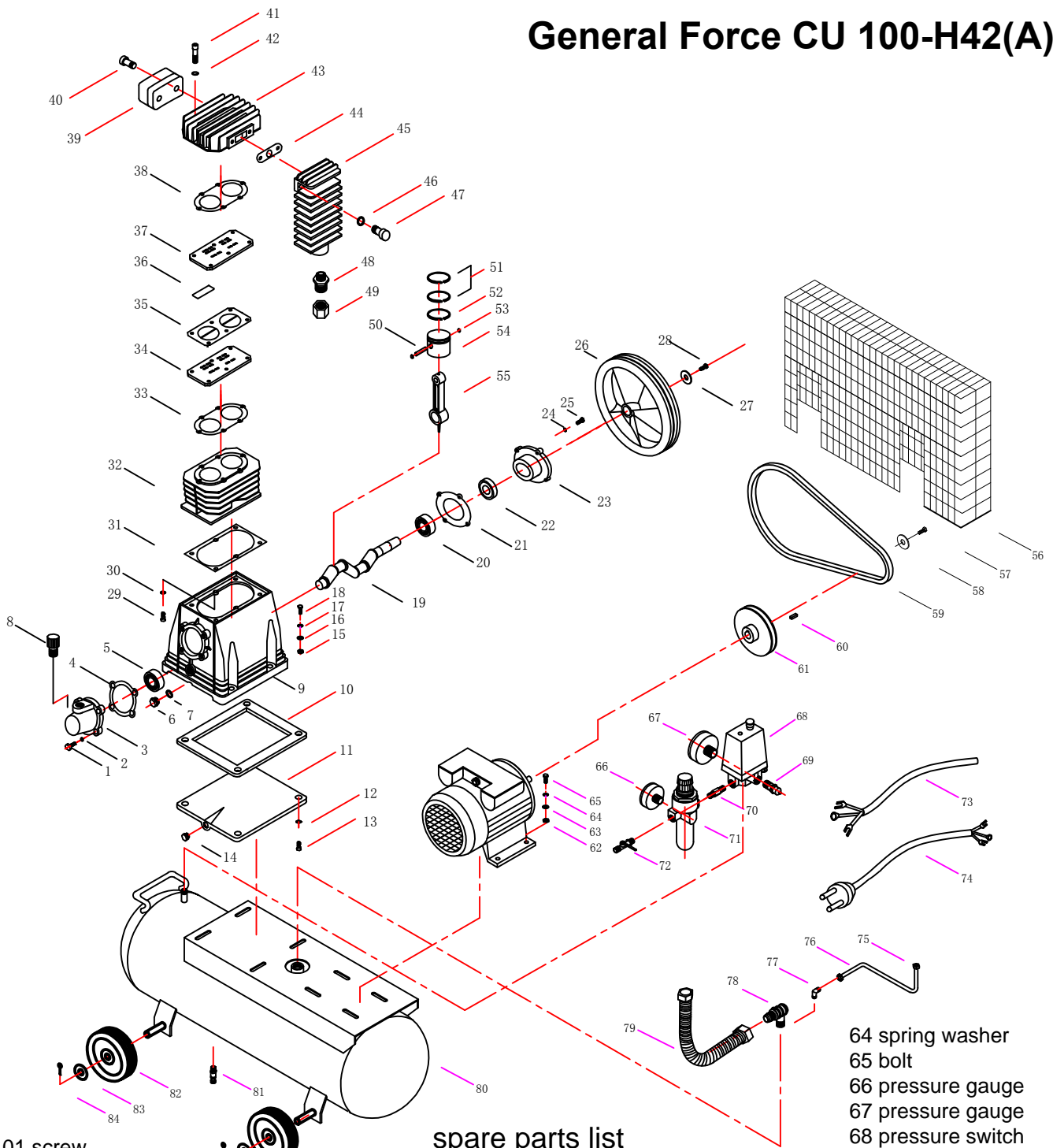


# General Force CU 100-H42(A)



- |                        |                         |                       |                     |
|------------------------|-------------------------|-----------------------|---------------------|
| 01 screw               | 18 bolt                 | 33 valve plate gasket | 48 connector        |
| 02 spring washer       | 19 crankshaft           | 34 valve plate        | 49 connector nut    |
| 03 front cover         | 20 ball bearing         | 35 aluminum gasket    | 50 piston pin       |
| 04 front cover gasket  | 21 bearing seat gasket  | 36 valve reed         | 51 compressor ring  |
| 05 bearing             | 22 oil seal             | 37 valve plate        | 52 oil ring         |
| 06 oil viewer          | 23 bearing seat         | 38 head cover gasket  | 53 pin clip         |
| 07 oil sightglass seal | 24 spring washer        | 39 air filter         | 54 piston           |
| 08 breather            | 25 bolt                 | 40 bolt               | 55 connecting rod   |
| 09 crankcase           | 26 flywheel             | 41 bolt               | 56 belt guard       |
| 10 baseplate seal      | 27 flywheel flat gasket | 42 spring washer      | 57 bolt             |
| 11 baseplate           | 28 flywheel screw       | 43 head cover         | 58 flat gasket      |
| 12 spring washer       | 29 hex screw            | 44 aftercooler gasket | 59 belt             |
| 13 hex screw           | 30 spring gasket        | 45 aftercooler        | 60 key              |
| 14 oil release plug    | 31 cylinder gasket      | 46 spring washer      | 61 motor pulley     |
| 15 nut                 | 32 cylinder             | 47 bolt               | 62 nut              |
| 16 flat gasket         |                         |                       | 63 flat gasket      |
| 17 spring washer       |                         |                       | 64 spring washer    |
|                        |                         |                       | 65 bolt             |
|                        |                         |                       | 66 pressure gauge   |
|                        |                         |                       | 67 pressure gauge   |
|                        |                         |                       | 68 pressure switch  |
|                        |                         |                       | 69 safety valve     |
|                        |                         |                       | 70 connecting bolt  |
|                        |                         |                       | 71 regulator        |
|                        |                         |                       | 72 air valve        |
|                        |                         |                       | 73 motor power cord |
|                        |                         |                       | 74 power cord       |
|                        |                         |                       | 75 nut              |
|                        |                         |                       | 76 tube             |
|                        |                         |                       | 77 elbow            |
|                        |                         |                       | 78 check valve      |
|                        |                         |                       | 79 exhaust pipe     |
|                        |                         |                       | 80 tank             |
|                        |                         |                       | 81 drain valve      |
|                        |                         |                       | 82 wheel            |
|                        |                         |                       | 83 flat gasket      |
|                        |                         |                       | 84 split pin        |