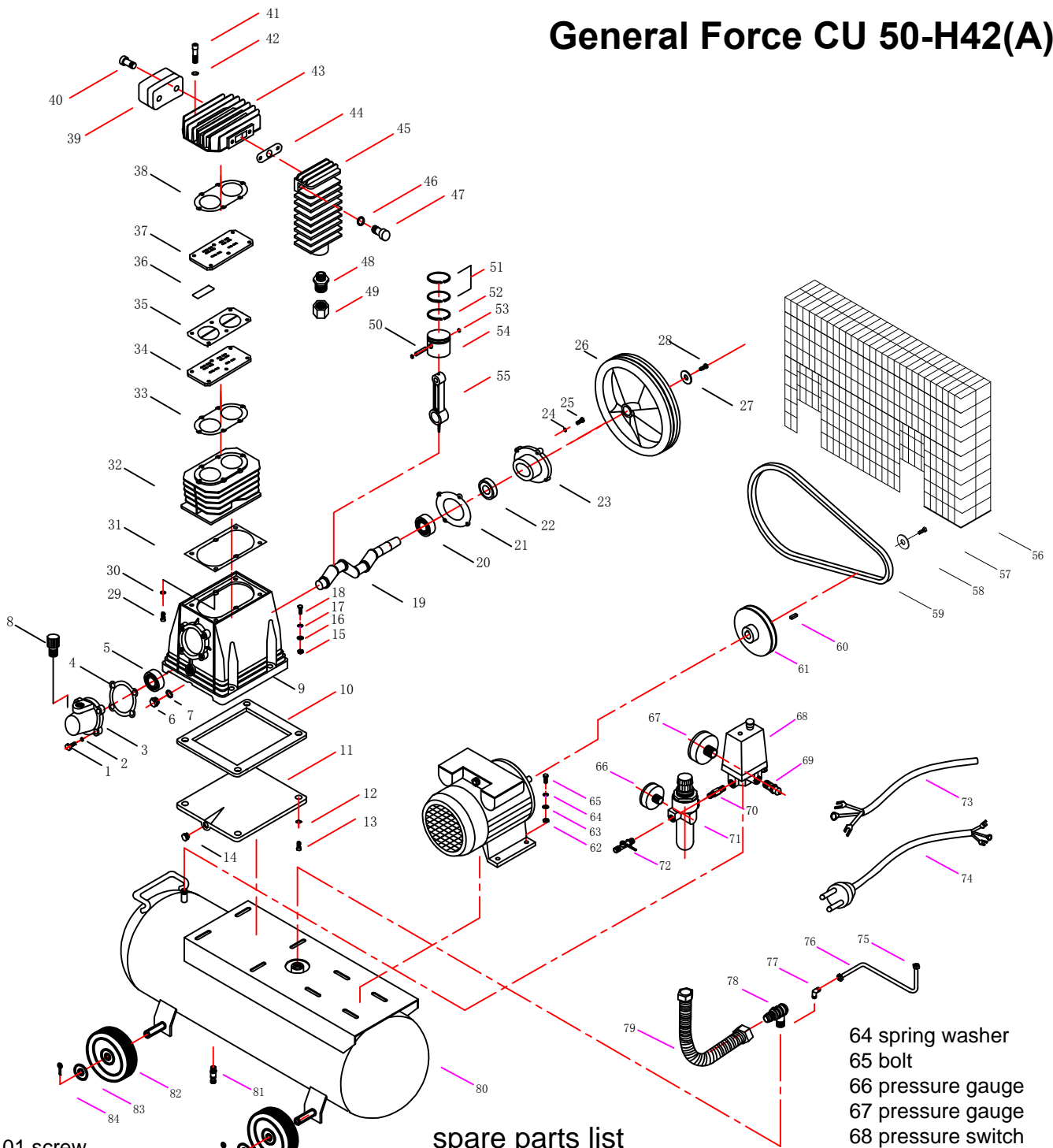


General Force CU 50-H42(A)



- | | | | |
|------------------------|-------------------------|-----------------------|---------------------|
| 01 screw | 18 bolt | 33 valve plate gasket | 48 connector |
| 02 spring washer | 19 crankshaft | 34 valve plate | 49 connector nut |
| 03 front cover | 20 ball bearing | 35 aluminum gasket | 50 piston pin |
| 04 front cover gasket | 21 bearing seat gasket | 36 valve reed | 51 compressor ring |
| 05 bearing | 22 oil seal | 37 valve plate | 52 oil ring |
| 06 oil viewer | 23 bearing seat | 38 head cover gasket | 53 pin clip |
| 07 oil sightglass seal | 24 spring washer | 39 air filter | 54 piston |
| 08 breather | 25 bolt | 40 bolt | 55 connecting rod |
| 09 crankcase | 26 flywheel | 41 bolt | 56 belt guard |
| 10 baseplate seal | 27 flywheel flat gasket | 42 spring washer | 57 bolt |
| 11 baseplate | 28 flywheel screw | 43 head cover | 58 flat gasket |
| 12 spring washer | 29 hex screw | 44 aftercooler gasket | 59 belt |
| 13 hex screw | 30 spring gasket | 45 aftercooler | 60 key |
| 14 oil release plug | 31 cylinder gasket | 46 spring washer | 61 motor pulley |
| 15 nut | 32 cylinder | 47 bolt | 62 nut |
| 16 flat gasket | | | 63 flat gasket |
| 17 spring washer | | | 64 spring washer |
| | | | 65 bolt |
| | | | 66 pressure gauge |
| | | | 67 pressure gauge |
| | | | 68 pressure switch |
| | | | 69 safety valve |
| | | | 70 connecting bolt |
| | | | 71 regulator |
| | | | 72 air valve |
| | | | 73 motor power cord |
| | | | 74 power cord |
| | | | 75 nut |
| | | | 76 tube |
| | | | 77 elbow |
| | | | 78 check valve |
| | | | 79 exhaust pipe |
| | | | 80 tank |
| | | | 81 drain valve |
| | | | 82 wheel |
| | | | 83 flat gasket |
| | | | 84 split pin |